

Paper Title for SEEDI'26

First A. Author¹, Second B. Author², Third C. Author³, and Fourth D. Author²

¹ Affiliation 1, Postal Address, First@affil1

² Affiliation 2, Postal Address, {Second.Fourth}@affil1

³ Affiliation 3, Postal Address, Third@affil1

ABSTRACT

This is a MS Word-type document. Please carefully read the guidelines given in this template. The FULL PAPER consists of a short abstract (max. 250 words), 3-5 keywords, followed by a brief introduction, methodology, results and conclusions.

Key words: *keyword 1, keyword 2, keyword 3*

INTRODUCTION

Unless otherwise specified herein, manuscripts should conform to the template provided. If you do not follow these guidelines, your submission may not be considered by the conference committee. The reference style must be in numbered format e.g., [1,2].

The conference committee will only consider full paper addressing topics of substantial current interest, in accordance with the scope of the conference. The full paper must present recent and/or original work. Your submission can be considered for an oral presentation. For further information, please visit TechXchange-2024 website <https://techxchangeconference.net>.

The deadline to submit your full paper is **JANUARY 10, 2026**.

Tables should be labeled Table 1, Table 2, etc. at the top of each table followed by a table caption. The style Table caption should be used for the table caption.

Table 1. Margins to use in this paper

Margin	Size	Size
Left	25mm	1in
Right	25mm	1in
Top and bottom	25mm	1in

For Microsoft Word users the Page Setup Dialog should appear as shown in Fig. 1. Center your Figures and Tables. Also center the caption.

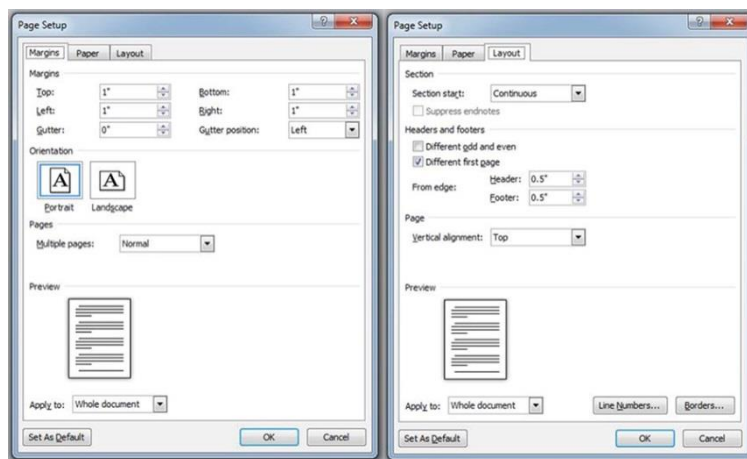


Figure 1. The Page Setup Dialog Box (Margins) for formatting MS Word

METHODOLOGY

Elaborate on the methodology, research design, sample size, data collection techniques, and analysis methods to give a clearer picture of how the study has been conducted.

RESULTS AND ANALYSIS

Consider providing more specific and quantifiable results in this section.

CONCLUSIONS

Conclude the study by summarizing the key findings and their implications. Suggest potential areas for further research.

REFERENCES

- [1] A. Author, B. Author, and C. Author. Journal article title. Journal, 1:1–10, 2023.
[2] A. Author and B. Author. Book title. Edition, Vol.1. Publisher, 2023.

Note:

- **The length of the full paper including tables/graphs and reference should not exceed SIX (06) pages.**
- **The paper should be single column with single line spacing. Font style Time new roman, font size 11.**
- **Please DO NOT modify headers.**
- **Please DO NOT use page numbers. These will be applied when the proceedings are compiled.**